

# SHOWDAILY™

The Daily News of IMTEX FORMING 2024

Organiser



Indian Machine Tool  
Manufacturers' Association



International Forming Technology Exhibition

19 - 23 JANUARY 2024, BIEC, BENGALURU

Concurrent Shows



International Exhibition of Dies & Moulds, Parting Tools,  
Machine Accessories, Metrology and CAD / CAM



International Conference on  
Digital Manufacturing Technology



Exhibition for Welding, Cutting & Joining | 2024

In association with

DAY 3 SUNDAY  
21 JANUARY  
2024



Cutting | Bending | Welding | Automation

LASER  
TECHNOLOGIES™

## IMTEX FORMING 2024,

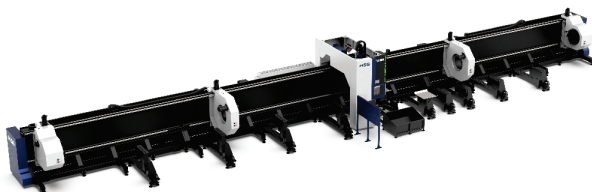
Renowned for metal forming and technologies from nationwide, serves as the prime platform for Laser Technologies Pvt. Ltd. to spotlight a formidable lineup of groundbreaking solutions. LTPL's presence at this esteemed event signals a momentous leap in revealing a suite of advanced products designed for diverse industrial applications.



Revolutionary  
Advances  
in Metalworking by  
**Laser Technologies Pvt. Ltd.**  
Unveiled at  
**IMTEX FORMING 2024**

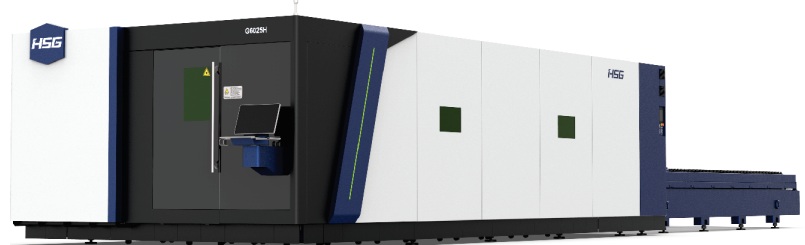
## Advancing Industry Standards through Cutting-edge Products

### Laser Tube Cutting Machine TL660



At the core of Laser Technologies' display stands the TL660 Tube Cutting Machine, an epitome of precision engineering. This state-of-the-art solution offers unmatched accuracy in heavy duty tube cutting applications, ensuring flawlessness and consistency in every cut. Its efficiency versatility and wide range caters diverse demands of industries reliant on precision Tube Cutting.

### Laser Sheet Cutting Machine G6025H 20KW



Empowering industries with superior power and capability, the G6025H 20KW Laser Sheet Cutting Machine is a powerhouse solution. Boasting high wattage and advanced features, it delivers immaculate sheet cutting precision and speed addressing the evolving needs of Manufacturing, Automotive, Aerospace and many more sectors.

### Laser Tube Cutting Machine R3



The R3 Tube Cutting Machine embodies technological prowess, as a professional Tube Cutting Machine. Its multifaceted applications cater to intricate designs and varied shapes, making it an indispensable tool across a spectrum of industries.

### Single Bed Laser Cutting Machine 6KW



Empowering industries with compact yet powerful capability, the G3015C 6 KW Laser Sheet Cutting Machine is a powerhouse solution. Boasting advanced features, it delivers immaculate sheet cutting precision, addressing the evolving needs of manufacturing industries.

Call: (+91)86574 12551 | [info@lasertechnologies.co.in](mailto:info@lasertechnologies.co.in) | [www.lasertechnologies.co.in](http://www.lasertechnologies.co.in)

## Advancing Industry Standards through Cutting-edge Products:

### Laser Engraving GCC

The Laser Engraving GCC solution signifies precision in detail. Offering unparalleled engraving capabilities, it caters to industries requiring intricate designs and fine detailing, from signage to artistic engravings.



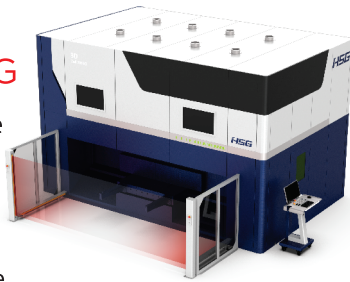
### Handheld Laser Fiber Welding Machine

Laser Technologies handheld welding and air-cooling welding machines signify innovation and convenience. These solutions offer portability without compromising on efficiency, making welding operations smoother more adaptable, and improves aesthetics with reduced heat-affected zone.



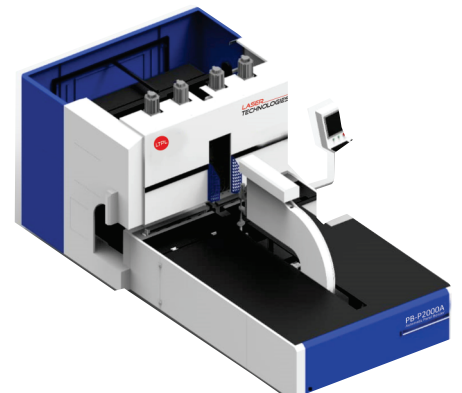
### Axis Laser Cutting Machine CELL 3015G

The 5 Axis Laser Cutting Machine CELL 3015G revolutionizes cutting capabilities, setting a new benchmark for complexity. Its precision and versatility are tailor-made for industries like Aerospace Engineering, Automotive, Engineering Machinery, Mold Manufacturing, Sheet Metal Production, and beyond, catering to their intricate cutting needs and diverse angle requirements.



### Panel Bender Machine

The Panel Bender Machine stand as symbol of efficiency and automation. Streamlining production processes, they enhance productivity while ensuring top-tier quality, its auto tool changing mechanism make impeccable.



## The cutting-edge laser solutions presented by LTPL at IMTEX FORMING 2024 stand to greatly benefit several key sectors:

- **Manufacturing:** Laser solutions offer precision cutting, welding, and engraving, enhancing manufacturing processes and product quality
- **Automotive:** Improved precision aids in manufacturing intricate components, facilitating advancements in vehicle design and performance.
- **Aerospace:** Laser technology's precision and versatility support the creation of intricate aerospace components, enhancing safety and efficiency in aviation.
- **Engineering Machinery:** Laser solutions enable precision cutting and shaping of machinery parts, improving performance and reliability.
- **Mold Manufacturing:** High precision in laser cutting and engraving enhances mold-making accuracy for various industries.
- **Sheet Metal Production:** Advanced laser technology streamlines sheet metal cutting and shaping, benefiting construction and metalworking sectors.

Laser Technologies involvement in IMTEX FORMING 2024 marks a pivotal moment in metalworking capabilities, signalling a new dawn of industry revolution. Introducing these pioneering solutions underscores a vision to transform sectors by refining precision, optimizing operations, and establishing new efficiency standards. Visitors exploring LTPL's booth at IMTEX will witness the transformative potential infused within these innovations. Promising enhancements in manufacturing processes and product quality, these pioneering advancements aim to propel growth, set higher standards, and redefine the world of metalworking technologies.

**IMTEX FORMING  
2024**  
**19-23 January 2024,  
Bangalore**  
**HALL NO: 5**  
**STALL NO: B102**



# SHOWDAILY™

The Daily News of IMTEX FORMING 2024

Organiser



Indian Machine Tool  
Manufacturers' Association



International Forming Technology Exhibition

19 - 23 JANUARY 2024, BIEC, BENGALURU

Concurrent Shows

Tooltech 2024

International Exhibition of Dies & Moulds, Parting Tools,  
Machine Accessories, Metrology and CAD / CAM



International Exhibition of  
Digital Manufacturing Technology

WELDEXPO

Exhibition for Welding, Cutting & Joining | 2024

In association with

DAY 3 SUNDAY  
21 JANUARY  
2024

## LASER TECHNOLOGIES

# Helping Reach New Heights

The SLTL Group, a pioneer in laser technology since 1989, has its spotlight on cutting-edge Industry-4.0-ready laser solutions, designed to propel businesses to new heights.



Source: Magic Wand Media

The SLTL Group has partnered with various industries world-wide for over three decades, crafting tailored solutions to meet their diverse needs. The company's innovative systems have empowered its customers to not only cut costs but also enhance efficiency and productivity, earning them a respected reputation globally.

"Participating in IMTEX is integral to SLTL Group's business growth as it provides a platform to showcase our ground-breaking sheet metal laser solutions. The exhibition allows us to connect with industry leaders and potential clients and helps us stay abreast of market trends," says Maulik Patel, Executive Director, SLTL Group.

"By engaging with a targeted audience, we can enhance brand visibility, build strategic partnerships, and demonstrate our technological prowess. IMTEX fosters networking opportunities, enabling us to understand customer needs and preferences. This exposure translates into an increased market share and customer trust and ultimately contributes to the sustained growth of SLTL Group in the competitive field of metal forming solutions," he adds.

Since pioneering the first fiber laser cutting machine at IMTEX, the SLTL Group continues to unveil new technologies, exemplifying its commitment to innovation and excellence.

To be continued on 4 ▶

Meiban®

MURATEC FOR AUTOMATION AND PROCESS INTEGRATION

muratec

M3048TG

Process  
Integration  
at its best!



Punching Machine with 8-Station Tapping.

M2048TS  
with SL2512



20-Ton Punching Machine with Swing Loader.

BB4013



High Accuracy All Electric  
Ball Screw Press Brake

VISIT US AT

HALL 4  
STALL B103

Bangalore | Chennai  
Mumbai | New Delhi | Pune



## MAULIK PATEL Executive Director SLTL Group

**Our focus remains on providing cost-effective, high-quality, futuristic solutions to the Indian market. We take immense pride in our collaborative efforts, persistently working towards delivering unparalleled value for our customers.**



Source: Magic Wand Media

ment to shaping the future of manufacturing. At IMTEX FORMING 2024, the Group's showcase encompasses a diverse array of cutting-edge technologies, including in-house developed technologies i.e SLTL Advantage in the form of Industry 4.0-ready laser solutions; SLTL Dynamix; SLTL Impact; SLTL Bolt; and SLTL e-tron technology.

### Catering to a plethora of industries

The company's 2D laser cutting systems provide precision and speed, optimizing manufacturing processes. The 5-axis versatile cutting system ensures intricate and complex designs. Laser welding solutions guarantee high-quality joins in automotive manufacturing

and EVs where light-weight vehicles and seamless battery welding manufacturing is needed. Robotic solutions and automations enhance efficiency and reduce labor costs across industries. "Notably, all our solutions are Industry 4.0 ready, integrating seamlessly with smart technologies, ensuring future-proof operations for our clients in dynamic manufacturing, automoti-

ve, and aerospace environments," shares Patel.

"Industries such as manufacturing find our laser solutions crucial for precision cutting and shaping of materials, enhancing production efficiency. Fabrication businesses benefit from our advanced technologies, ensuring accuracy in metal processing. Anyone involved in the sheet metal industry will discover tailored solutions for them," he adds.

### Focus on SMEs

With the view to make it accessible to SMEs, the company has developed affordable, Made-in-India laser technology for sheet metal cutting in 2007. SLTL's fiber laser technology, priced at ₹1.3 crore, revolutionized the industry by significantly reducing costs compared to the earlier CO<sub>2</sub> lasers priced between ₹2-3 crore. "The operating cost of our fiber lasers is a mere quarter of that of CO<sub>2</sub> lasers, providing enduring benefits to our clients. Our

range of laser cutting machines caters to various customer categories, ensuring accessibility and value for money," says Patel.

### Expanding its reach

The Group's machines, including laser systems and cutting-edge technologies, are exported to over 45 countries. Major geographies covered are the US, UK, Ireland, Australia, New Zealand, Canada, South Africa, Dubai, Bahrain, Peru, Argentina, Ecuador, Austria, Germany, South Korea, Vietnam, Algeria, Egypt, Kenya, and Nigeria. The company's models cater to diverse industries, serving Fortune 500 companies and small to large-scale enterprises globally. Collaborations with foreign companies involve technology exchange and knowledge transfers. Its clientele ranges from small fabricators to multinational corporations, spanning private and government organizations, both domestically and internationally. **SD**

### LIVE DEMOS AT IMTEX FORMING 2024 (HALL & STALL: 5 B-106)

- Infinity F1 – Ultra High Power Laser Cutting Machine
- X5 – 3D Laser Cutting Machine
- Vector – Debut at IMTEX FORMING 2024 with intelligent features and an all-new look
- Tube Cutting Machine Automation

### PRODUCT DISPLAY AT WELDEXPO (HALL & STALL: 3A/B-108)

- Nova – For Batter Welding for Automotive and EVs
- Hertz – Hand Held Flexible Welding System
- Fibo Cell – Robotic Welding



PUNE  
**MACHINE TOOL EXPO**™  
2024  
23 - 26 May 2024  
Pune International Exhibition  
and Convention Center, Moshi, Pune

Delivered by IMTMA, organizer of **IMTEX**

Special Pavilions



Organiser



Media Partner



#### FOR BOOKINGS CONTACT

North	West	South
Tanvi Gupta Mob: +91 9871024956 Email: tanvi@imtma.in	Gaurav Singh Mob: +91 9922419036 Email: gauravsingh@imtma.in	Umesh Purohit Mob: +91 9822777164 Email: umesh@imtma.in
		Deepak Patil Tel: +91 80 6624 6813 Email: deepak@imtma.in
		Prabhugouda Patil Mob: +91 9980432663 Email: prabhu@imtma.in

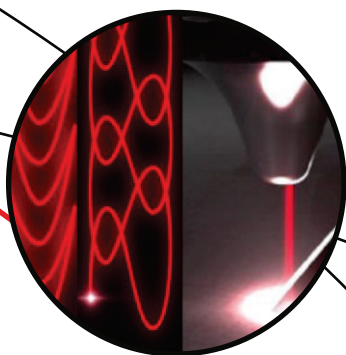


# AWARD WINNING TECHNOLOGY

Ground Breaking Applications for Laser Processing

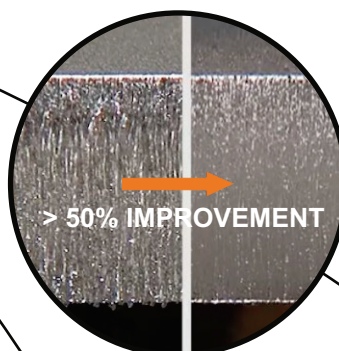


High-speed, Stable-processing fiber laser machine



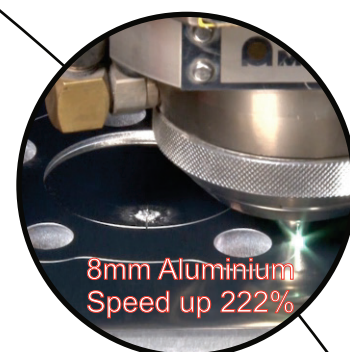
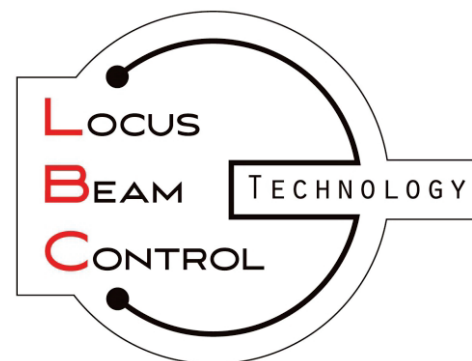
## Revolutionary beam control

Beam pattern manipulation  
& Kerf width control



## Co2 type quality

50% cut surface improvement  
vs conventional solid state lasers



8mm Aluminium  
Speed up 222%

## Lower cost-per-part

Higher productivity with  
less power and lower investment

AMNC 4ie



**VENTIS AJe**

*Fiber Laser*



Hall No - 5  
Booth No - B105



**Amada (India) Pvt. Ltd**  
Technical and Vocational Center  
No.60, KIADB Bengaluru Aerospace Park,  
Singahalli Village, Budigere Post, Bangalore,  
North Taluk - 562129, India.  
Ph:080-71100200



FIBER LASERS

# Proffering Practical and Reliable Solutions



Source: Magic Wand Media

IMTEX FORMING 2024 is an ideal platform for IPG Photonics (India) Pvt Ltd to showcase its cutting-edge technologies which have made IPG Photonics a world leader in Fiber lasers. This edition of the event, the company is focusing on some innovative applications. For the first time in India, IPG Photonics India is showcasing a live demo of its handheld laser welding machine integrated with a COBOT.

"We are also showcasing an extensive range of products and solutions for EV Battery Pack Manufacturing, Laser Drying application, Laser Cleaning application, Additive

Manufacturing, Plastic Welding, and Glass Cutting. Our Fiber Lasers find their use in various industries like Automotive, E-mobility, Consumer Electronics, Aerospace, Defence, Medical Device Manufacturing, Semiconductors, and Advanced Scientific, etc.," says Rajesh Sharma, General Manager, IPG Photonics (India) Pvt Ltd.

## IPG's innovations

This showcase of LightWELD, the handheld laser welding machine with a COBOT, is happening for the first time in India. It is a one-of-a-kind solution, which comes with the practicality and reliability of an IPG handheld laser welding machine and the versatility of a COBOT.



Source: IPG Photonics (India) Pvt Ltd

**RAJESH SHARMA**  
General Manager  
IPG Photonics (India) Pvt Ltd

With the widest range of Lasers in all power segments and for applications, IPG Photonics has been confidently serving the Indian Forming Industry through the IMTEX FORMING show. We are expecting this year to be no different.

## LIVE DEMO

- LightWELD XR + COBOT

## PRODUCTS ON DISPLAY

E-Mobility solution, Laser Drying, LightWELD with COBOT, Integrated Laser Welding Systems, Glass Cutting Solution, Additive Manufacturing, Polymer Welding, Laser Cleaning Solution

"We can also anticipate a surge in battery welding applications in the EV sector. In order to address this, IPG India is showcasing its entire solution range for this application. We have the AMB lasers with a Core and Ring feature for spatter-free, high-quality welding along with our Process Heads. This solution has been advanced by the introduction of our Inline Weld Monitoring System i.e. LDD 700 which is a real-time, non-destructive system for measuring weld quality," shares Sharma.

As India is currently experiencing a revolution in E-Mobility, IPG Photonics is also playing an active role in the transition to sustainable growth. Globally also, it is pioneering the E-mobility segment. Some of the globally leading E-Mobility brands are its customers.

SD

IPG Photonics (India) Pvt Ltd  
[www.ipgphotonics.com](http://www.ipgphotonics.com)  
Hall & Stall: 4/B-110

**Would you like to be crowned a Productivity Champion ?**  
..... Share your success stories on  
**PRODUCTIVITY | TECHNOLOGY | INNOVATION....**



Win Cash Awards upto  
**₹10,00,000**



**IMTMA - ACE MICROMATIC**  
Productivity Championship Awards 2024

"Showcasing Excellence in Manufacturing"

@

**National Productivity Summit 2024**  
November 2024

No Entry Fee | Multiple Entries Welcome !

## Special streams

Micro & Small Enterprises

Automotive & Auto Component Industry

Non-Automotive Industry

Rush your entries by  
30 April 2024

**Abhishek**  
M: +91 9844294387  
E: [abhishek@imtma.in](mailto:abhishek@imtma.in)

Contact:

**Madan**  
M: +91 7899437625  
E: [madan@imtma.in](mailto:madan@imtma.in)

For more details login to: [www.productivity.imtma.in](http://www.productivity.imtma.in)

ORGANISED BY  
Indian Machine Tool Manufacturers' Association

AWARDS SPONSOR  
**AceMicromatic Group**

## METROLOGY

# Simplicity Redefined

With the easy-to-use CT technology of the ZEISS METROTOM 1, anyone can efficiently perform complex measurement and inspection tasks with just one scan. ZEISS METROTOM 1 has the ability to measure and inspect hidden defects and internal structures that cannot be detected with tactile or optical measuring systems. Its installation is quick and only little training is needed for its safe handling. With dimensions of 1750 (W) x 1820 (H) x 870 (D) mm, the CT system fits into any metrology lab. With ZEISS METROTOM 1, one can perform nominal/actual comparisons, dimensional checks, and wall thickness analysis with confidence. Acquisition costs as well as the cost of ownership are minimal with the low-maintenance system. Whether medium or small-sized parts, plastic or light metal, with ZEISS METROTOM 1, one can inspect a variety of components

such as connectors, plastic caps, aluminum parts, and more. The High Resolution (HR) option increases the resolution from 65.3 µm auf 32.6 µm. This allows one to better detect defects and ensure the functionality and quality of parts.

SD

Carl Zeiss India (Bangalore) Pvt Ltd  
[www.zeiss.co.in/metrology/home.html](http://www.zeiss.co.in/metrology/home.html)  
Hall & Stall: 3A/A-122



Source: Carl Zeiss India (Bangalore) Pvt Ltd





# LightWELD®

Handheld Laser Welding & Cleaning

## + COBOT

**LIVE DEMO** | **HALL # 4**  
**BOOTH # B-110**



**LASER WELDING**



**COPPER WELDING**



**LASER CLEANING**

**MAXIMIZE WELDING PRODUCTIVITY**  
**WITH AN EASY TO USE COBOT INTERFACE**

+91 – 9560 608 808  
sales.india@ipgphotonics.com  
www.ipgphotonics.com

LEARN MORE  
ABOUT  
LightWELD





JAPAN FORMING MACHINERY ASSOCIATION

# Together to Grow



**SHIGEO MORIMOTO**  
Group Manager  
Japan Forming Machinery Association

High-precision and high-speed processing with servo presses and press brakes, as well as high-precision and thick plate processing with improved cutting technology of fiber laser machines will contribute to the upgrading of Indian manufacturing processes in the future.

Japan Forming Machinery Association  
[www.j-fma.or.jp](http://www.j-fma.or.jp)  
Hall & Stall: 3A/B16

Japan Forming Machinery Association (JFMA) and Indian Machine Tool Manufacturers' Association (IMTMA) have always been part of each other's exhibitions. IMTMA has always participated in MF-TOKYO organized by JFMA in Japan. "We expect a great deal of promotion of each other's industrial exhibitions. We also expect to promote the exchange of industrial machinery and production technology and the mutual understanding of the latest technological trends, which are important for the industrial circles of both countries," states Shigeo Morimoto, Group Manager, Japan

Forming Machinery Association.

## Japan's focus on India

About 14 companies from Japan, including 7 JFMA member companies, and 8 local subsidiaries of JFMA member companies are exhibiting. "India has the world's largest population and a large proportion of young people. The market is expected to grow in the automotive and other consumer products industries, and JFMA members are paying significant attention to India. SD

TUBE BENDING

# AMPCO METAL's Innovative Solutions



Source: AMPCO METAL India Pvt Ltd

Tube bending is a metal forming process used to permanently form tubes by bending them. Tubes play a vital role in various industries, whether serving as exhaust systems in the automotive sector, forming handrails in the furniture industry, or as lines for service in the marine industry. Bent tubes offer significantly enhanced utility compared to their straight counterparts. AMPCO METAL is a company specializing in the comprehensive design, production, and prove out of complete tube bend die sets, including bend dies, pressure dies, clamp dies, collets, and more. However, its primary expertise lies in the manufacturing of essential consumables for tool sets, such as wiper dies and mandrels. Utilizing AMPCO® Bronze in the company's tool manufacturing provides numerous advantages, including minimal friction, prevention of seizing, scratching, and corrosion, along with enhanced sliding properties. AMPCO® Bronze materials are highly recommended for bending of Stainless Steel, Titanium, and Inconel® tubes.

support to the tube, effectively minimizing issues like wrinkles or ovality. Unfortunately, in many cases, the mandrel's leading end is incorrectly placed behind the bending point, thereby transferring the load to the less durable balls and links, resulting in a notable reduction in the components' lifespan. AMPCO METAL has pioneered the creation of alloys suitable for mandrels and balls, including AMPCO® 18, AMPCO® 21, AMPCO® 22, and AMPCO® M4. Mandrels and balls made from these alloys boast an extended lifespan, leading to substantial reductions in production expenses. Additionally, there is no necessity for hardening or costly coatings on the mandrels. Both materials also effectively prevent galling.

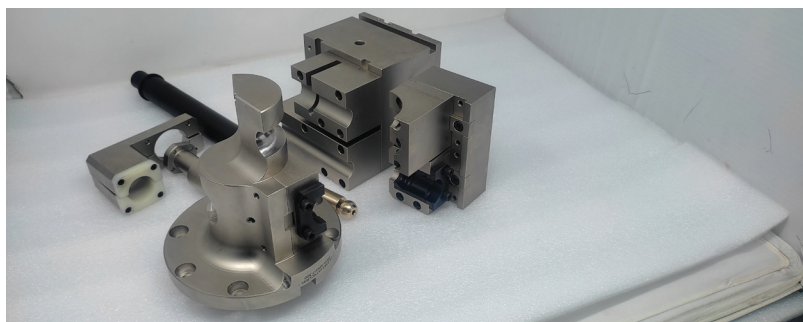
**Wiper Dies:** The function of a wiper die is to prevent the occurrence of wrinkles on the inner radius of the tube. It is specifically used in tubes with a relatively thin wall and smaller bend radii. AMPCO METAL has introduced alloys exceptionally well-suited for wiper dies, including AMPCO® 18, AMPCO® 18.23, and AMPCO® M4. In general, these materials provide a seamless setup and an extended operational life. For instance, wiper dies crafted from AMPCO® M4 can expect a lifespan of up to 20 times longer than that of traditional wiper dies. Moreover, all the mentioned alloys exhibit zero galling, scratching, and corrosion initiation points.

AMPCO METAL has developed alloys that are highly suitable for all sorts of tube bending tools. This innovative approach positions AMPCO METAL as a leader in the field of tube bending tools, enhancing the efficiency and longevity of critical processes in various industries. SD

## The best materials for tube bending tools

**Mandrels:** Mandrels serve the purpose of providing internal

AMPCO METAL India Pvt Ltd  
[www.ampcometal.com](http://www.ampcometal.com)  
Hall & Stall: 3A/126



Source: AMPCO METAL India Pvt Ltd



**Manufacturing Technology Training**  
An IMTMA initiative

**Enhance your professional capability through E-learning courses**



**IMTEX OFFER**  
**50% DISCOUNT ON PRICE**  
1<sup>st</sup> December 2023 to 31<sup>st</sup> January 2024

- Accessible 24x7 at your flexible timings
- Contents developed by SMEs / Industry Experts
- Built-in interactivity, animations and videos
- Knowledge checks and Final assessment for evaluation
- Bulk licencing for Industries / Institutions
- On-line certification

**Access at Anytime**

**Access from Anywhere**

**Access to Anybody**

Get started... Now... Log on to...  
[www.imtmaelearn.in](http://www.imtmaelearn.in)





Indian Machine Tool Manufacturers' Association

For further details and registration, please contact:  
Contact : 9535162810  
e-mail : [kng@imtmaelearn.in](mailto:kng@imtmaelearn.in)  
[www.imtmatraining.com](http://www.imtmatraining.com) | [www.imtmaelearn.in](http://www.imtmaelearn.in)

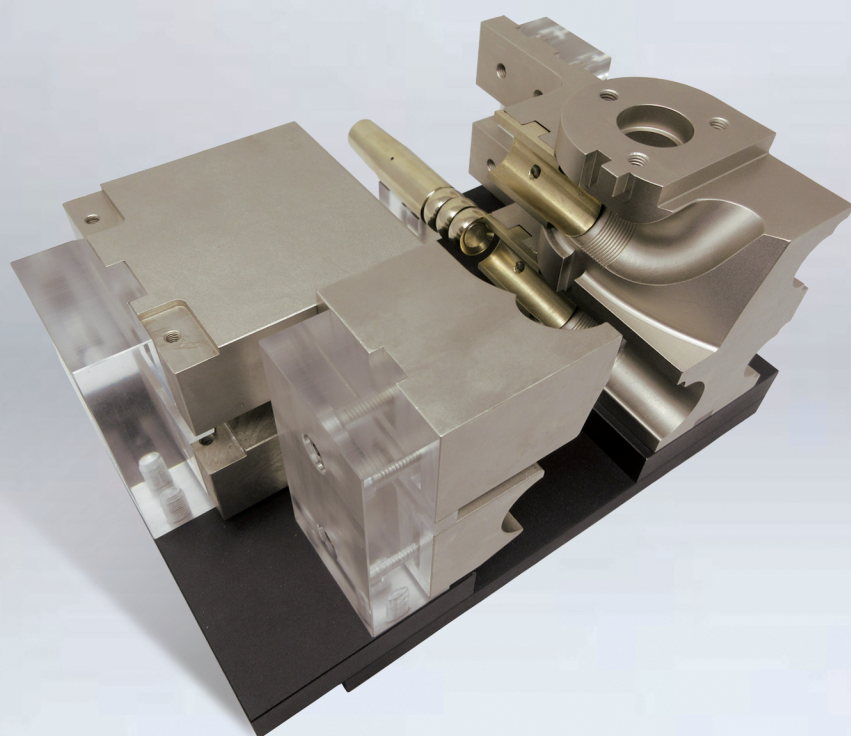




## 100% IN-HOUSE PRODUCTION OF TUBE BENDING TOOLING IN OUR STATE OF THE ART FACILITY IN PUNE, INDIA

AMPCO METAL offers end-to-end solutions (from design to customer-end validation) of the entire Rotary draw tube bending tool set. This includes durable items like bend die, clamp die, pressure die, collet in special steel material and consumables like ball mandrel and wiper die in AMPCO® Bronzes.

For tube bending of stainless steel and titanium material, AMPCO® 18, AMPCO® 18.23, AMPCO® 21 and AMPCO® M4 are used with great benefits.



With AMPCO® Aluminium Bronze, you get:

- Minimum friction
- Reduced cost per bend
- No seizing or scratching
- Reduced production costs
- Improved sliding properties
- Increase in product quality
- Speed up tool manufacturing
- Longer life of production tooling



**AMPCO METAL INDIA PVT. LTD.**  
A-8/4, Village - Nighoje,  
Chakan MIDC, Phase IV, Tal : Khed  
Pune - 410501,  
Maharashtra - INDIA  
Tel. +91 2135 610 810  
Infoindia@ampcometal.com

**AMPCO METAL S.A.**  
Route de Chésalles 48  
P.O.Box 45, 1723 Marly  
SWITZERLAND  
TOLL FREE PHONE: 800 8080 5050  
Tel.: +41 26 439 93 00  
Info@ampcometal.com



**PANEL BENDERS**

# Bending It Right

**Salvagnini Machinery India Pvt Ltd**  
[www.salvagninigroup.com/en-INT](http://www.salvagninigroup.com/en-INT)  
Hall & Stall: 5/B-101



Source: Magic Wand Media

**S**alvagnini Machinery India Pvt Ltd stands at the forefront of technological innovation. The testimony to that is its latest showcase at IMTEX FORMING 2024. Talking of the role the event plays in the company's growth, Puneet Sharma, Director, Salvagnini Machinery India Pvt Ltd, notes, "Participating in IMTEX FORMING is a strategic investment in our growth. The exposure, networking, and insights gained from this esteemed exhibition contribute significantly to our business expansion, ensuring that we remain agile, inno-

vative, and competitive in the dynamic market scenario." The company is highlighting its New Generation Panel Bender that stands as a testament to engineering excellence, energy efficiency, and a space-saving design. Ideal for companies venturing into panel bending, it upholds high technological standards while keeping energy consumption to a minimum. Its productivity and versatility align seamlessly with Salvagnini's renowned reputation. "Our commitment to advancing Flexible Manufacturing Systems

(FMS) is underscored by the unveiling of our Generation 4 Panel Bender—an electric marvel that not only automates punch-cutting and bending but also poses a formidable challenge to conventional bending methods," shares Sharma. "These technologies not only streamline processes but also enhance overall system efficiency," he adds.

## Redefining manufacturing

In the dynamic landscape of manufacturing, Industry 4.0 and automation stand as two pivotal elements that Indian customers are poised to prioritize at IMTEX FORMING 2024. According to Sharma, as industries embrace the fourth industrial revolution, the integration of smart technologies and automated solutions has become integral to enhancing efficiency, precision, and overall productivity. As Indian customers navigate IMTEX FORMING 2024, their discerning eyes will be on exhibi-

tors who present not only Industry 4.0 integration but also cutting-edge automation solutions. "The synergy between these two elements promises to redefine manufacturing standards, offering unprecedented levels of efficiency and adaptability to the evolving needs of the Indian industrial landscape," adds Sharma.

## Key industry sectors

The company is receiving a wide spectrum of visitors and delegates at its booth, representing key industry sectors such as HVAC, furniture, elevators, doors, and job shops. "Recognizing the unique challenges each industry faces in sheet metal fabrication, we have tailored our solutions with precision and expertise. We understand that there is no one-size-fits-all approach when it comes to sheet metal fabrication, and we pride ourselves on being at the forefront of technological innovation, ready to provide industry-specific solutions that elevate efficiency and productivity."

**SD**

**LIVE DEMOS (10 AM TO 6 PM)**  
• Panel Bender – P2L-2120

## MANUFACTURING TECHNOLOGY QUIZ CONTEST

# Shaping Future Engineers

**O**rganized by Indian Machine Tool Manufacturers' Association, the manufacturing technology quiz focused on emerging technologies. The quiz

was woven around the future of manufacturing theme. Participants from several engineering colleges took part in the competition, which was held yesterday during the show.



M. S. Ramaiah University of Applied Sciences, Bangalore bagged the first position and cash prize of ₹10,000



and Chennai Institute of Technology, second position and cash prize of ₹5,000 respectively.

**SD**

Source: Magic Wand Media

## ELECTRIC VEHICLE LASER WELD CUTTING MACHINES

# Chennai Metco's EV Laser Weld Cutting Machine

**C**hennai Metco's Electric Vehicle Laser Weld Cutting Machine is specially designed to meet the unique requirements of electric vehicles. In electric vehicles, crucial electrical connectors are held by specialized laser welding. The company's cutting-edge Electric Vehicle Laser Weld Cutting Machine is equipped with advanced features for analyzing and examining laser weld quality.

One of the leading manufacturers of Metallography Equipment and its consumables, Chennai Metco has been a global player supplying machines and consumables related to metallography and petrography worldwide since its inception in 2000. The company offers a complete set-up for metallography and petrography lab ranging from sectioning, mounting, grinding, polishing, hardness testing, and microscopy.

Technical expertise and in-house manufacturing offer the company the advantage of customizing machines according to customer requirements. **SD**



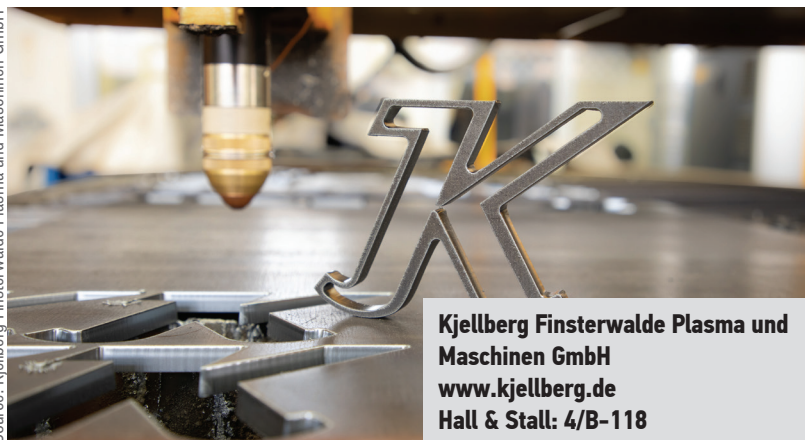
**Chennai Metco Pvt Ltd**  
[www.chennaietco.com](http://www.chennaietco.com)  
Hall & Stall: 3/C-116

Source: Chennai Metco Pvt Ltd



**PLASMA CUTTING**

## Kjellberg's New Plasma Power Source K 200



**Kjellberg Finsterwalde Plasma und Maschinen GmbH**  
[www.kjellberg.de](http://www.kjellberg.de)  
Hall & Stall: 4/B-118

**K**jellberg is expanding its portfolio for plasma cutting with the new power source K 200. With the K 200, users can focus on the essentials of plasma cutting: optimal and reliable cutting results with easy operation and low investment and operating costs. The power source cuts with oxygen, air, and nitrogen in the material thickness range from 1 to 60 mm with a maximum cutting current of 200 A. In addition, the K 200 has a marking function. It has

integrated automatic gas control and a torch with direct connection. A manual torch extends the range of application to manual cutting and gouging. Overall, the user benefits from low investment costs and easy installation, operation, and maintenance of the system. The K 200 can be fully integrated into CNC guidance systems or controlled and monitored via smartphone. The accompanying app also allows the user to see all parameters and settings at a glance and customize cutting data. **SD**

**IMTMA INITIATIVES**

## Jagruti: Molding Young Minds

**J**agruti, the two-day program for students as part of IMTEX FORMING 2024 commenced yesterday, attracting 26 engineering college students from different parts of India, such as Chennai, Bangalore, Baroda, Ahmedabad, and Mumbai. The batch is a mix of undergraduates and post-graduates who are pursuing their studies in different fields of engineering, such as Mechanical, Production, Mechatronics, and Software. With an aim to educate engineering students and make them industry-ready, Jagruti Program was started more than a decade ago. Over the years, it has become popular, beco-

ming an integral component of the IMTEX trade fair, and aligning with the immense growth potential of the Indian manufacturing industry. Prasad Pendse, Director, IMTMA along with Nisha Lobo, Director, Alex Machine Tools Pvt Ltd, and Satish Kumar S, Senior Advisor, IMTMA addressed the participants in the opening ceremony. Lobo highlighted the workings of a modern grinding machine, emphasizing the interdisciplinary nature of machine tools design. Satish Kumar elaborated on the importance of the upgradation of knowledge and innovation and knowing how and when to observe and inspect outputs in modern machines. **SD**



Source: IMTMA

# DAVI

## Heavy Duty Plate Rolls

**MAV 3-roll** with variable axis, mostly dedicated to the Oil & Gas sector

**MCB 4-roll**, with dedicated solutions and accessories for Wind Energy Towers and Foundations

visit us at  
Hall No: 4  
Stall No: A 152  
19 - 23 January 2024  
BIEC, Bangalore

[www.davi.com](http://www.davi.com)

**IMTEX FORMING 2024**  
International Forming Technology Exhibition  
19 - 23 January 2024  
BIEC, Bangalore

**BATLIBOI**

**Batliboi Ltd.**

**Machine Tool Group**

Bharat House, 5th Floor, 104 Bombay Samachar Marg, Fort, Mumbai - 400 001

T : +91.22.6637 8200 E : [info@batliboi.com](mailto:info@batliboi.com) W : [www.batliboi.com](http://www.batliboi.com)



**PUNCHING MACHINES**

# When Innovation is a Constant



Source: Magic Wand Media

**RadCAM Technologies Pvt Ltd**  
[www.Radcamtechnologies.com](http://www.Radcamtechnologies.com)  
Hall & Stall: 4/A-107

**R**adCAM Technologies has been consistently introducing its latest innovations at IMTEX FORMING to grow along with its customers. Here's knowing what it has to offer this edition. For Siddhu Jolad, Managing Director & Business Head, RadCAM Technologies Pvt Ltd, meeting and connecting with prospects who aspire to grow is a key factor for the company to participate in the event. "Participating in shows like IMTEX FORMING also helps to strengthen our relationships with existing customers. We believe that face-to-face communication is highly effective. Speaking directly to target customers who are actively looking to upgrade their setup helps mutual growth. Hence, we constantly keep bringing new product offerings for each IMTEX," he shares.

**SIDDHU JOLAD**  
Managing Director &  
Business Head  
RadCAM Technologies Pvt Ltd

**Participating in shows like IMTEX FORMING helps to strengthen our relationships with existing customers. We believe that face-to-face communication is highly effective. Speaking directly to target customers who are actively looking to upgrade their setup helps mutual growth.**



Source: RadCAM Technologies Pvt Ltd

The company is showcasing its flagship product Euromac XT 12, a reliable and economical Punching Machine, along with Digibend 400 a

Horizontal Bending machine and Notching machine in this edition. "This is our most advanced and anticipated model. With this machine,

customers will have options to build the machine they need – Hydraulic, Electric, or our latest Innovation Hybrid Flex 2.0. With a working range of 3000 x 1500 and 1100 hits per minute, this machine will be able to meet all requirements of customers while maintaining our highest standards, yet it will be affordable to customers," he adds.

While the Punching Machine can process up to a thickness of 6 mm, it also can process bus bars. Digibend, on the other hand, offers high-precision bending along with shearing and punching operations for the Busbar industry as well as pipe bending applications. RadCAM's innovations are also up for live demos on all days of IMTEX FORMING 2024. These include Euromac XT 12 Punching Machine; Euromac Digibend 400 CNC; Euromac VA 220 Multi Notching Machine; and Metalix CAD/CAM Sheet metal Nesting Software.

## Automation is Future

According to Jolad, complete shop floor automation is the future of the Sheet Metal industry – 'starting from inventory and ending with the dispatching of finished goods to the customer'. "With the 'best in our segment' products, RadCAM is offering futuristic and reliable automation options to customers. One of the promising sectors for the Indian market is infrastructure. We need to build more metro stations, airports, railways, construction, communication, and mobility," he concludes. **SD**

## LIVE DEMO OF MACHINES

- Euromac XT 12 Punching Machine • Euromac Digibend 400 CNC • Euromac VA 220 Multi Notching Machine
- Metalix CAD/CAM Sheet metal Nesting Software

**PLATE ROLLING MACHINES**

# Heavy-duty MAV for Oil & Gas

**Batliboi Ltd**  
[www.batliboi.com](http://www.batliboi.com)  
Hall & Stall 4/A-152

**M**AV, 3-roll with variable axis, is the heavy-duty solution mostly dedicated to the Oil & Gas sector, especially for the fabrication of boilers and pressure vessels. The MAV is characterized by its symmetrically balanced load on the top roll, resulting in a more compact machine, minimal offset of the rolls, the cylinder close to the plate, balanced forces, and no stress on the frames.

The Davi 3-roll variable-axis plate rolling machine is a flexible and accurate tool for plate bending. It features motorized rolls, precise positioning, and a sturdy frame for enhanced performance. The tilting rolls enable precise cone bending, while mechanical and hydraulic symmetry ensures improved tolerances and load distribution. With the patented Servo-Tronic® system, roll parallelism is maintained, and the multi-gearbox configuration enhances operability and maintenance. **SD**

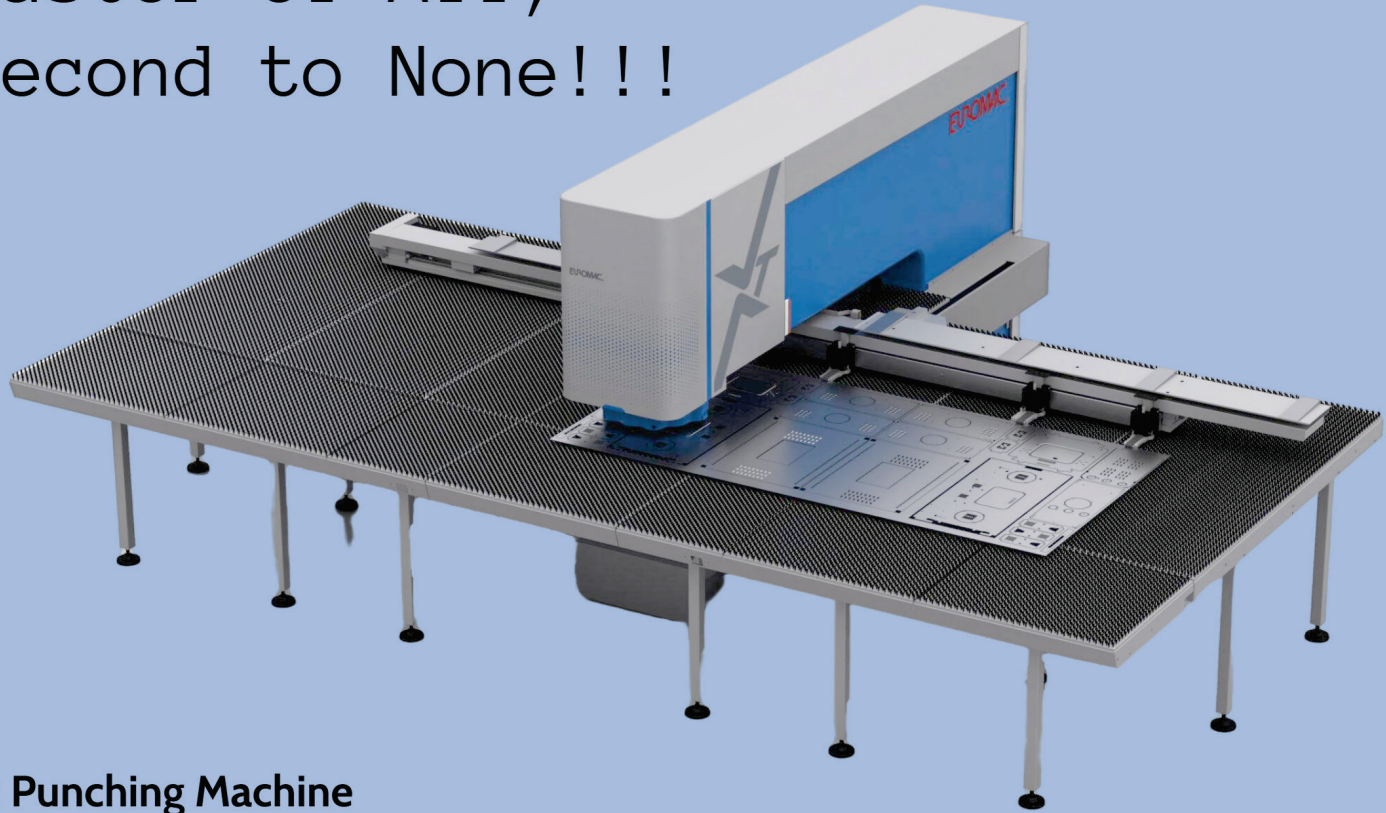


Source: Batliboi Ltd



# EUROMAC<sup>®</sup>

Master of All,  
Second to None!!!



## Turret Punching Machine

- 1) Industry Best Power Consumption of 4.5 KW.
- 2) Capacity of 102 tools with 48 indexed tools.
- 3) Available in Hydraulic, Hybrid, Electric.
- 4) Can Process 3000 x 1500 without reposition.
- 5) Scratch free sheet processing.
- 6) Can Punch upto 6mm MS. and 10mm Copper



VISIT US AT

HALL 4,

19 - 23 January 2024, STALL A107  
BIEC - Bengaluru

 **Radcam**  
Technologies  
*Solutions Simplified*

Mail: [info@radcamtechnologies.com](mailto:info@radcamtechnologies.com)



**TRANSFER PRESSES AND SERVO PRESSES**

# Pressing Ahead Innovatively



Source: Magic Wand Media

ISGEC Heavy Engineering Ltd is showcasing its following innovations at IMTEX FORMING 2024:

**Transfer Presses:** ISGEC offers optimized and high-productivity solutions for medium-sized stamped parts. Transfer presses have become a popular solution across the globe and ISGEC has a wide experience of supplying these presses in tandem with various transfer system suppliers from Europe, Asia, and the USA.

**Automated Tandem Press Lines:** Automated Tandem Press Lines have become very popular with various Tier-1 Indian customers due to flexibility in the production of parts and high productivity. ISGEC has worked with various leading global robotic suppliers like ABB, KUKA, and YASKAWA and can offer a complete solution for these types of presses.

**Press Hardening Lines:** ISGEC, in collaboration with AP&T-Sweden, is offering turnkey solutions for



Source: Magic Wand Media

**YOGESH SAXENA**  
Chief Executive - Machine Building  
ISGEC Heavy Engineering Ltd

**IMTEX FORMING is the largest platform for machine tool manufacturers and machine tool buyers in the sub-continental region. Hence, it is crucial that we showcase our latest technological developments after we participated in the last IMTEX FORMING.**

Press Hardening Lines for hot stamped parts in the Indian market. This technology is relatively nascent and unexplored by Indian

Automotive Manufacturers and a huge demand for this technology is expected in the next couple of years.

**NEW LAUNCH/UNVEILING OF MACHINES**  
• Press Brake • C Frame Mechanical Press

**Servo Presses:** This technology offers various advantages over conventional presses such as decreased electricity consumption, increased productivity, reduced maintenance, enhanced flexibility, and improved part quality. ISGEC has already supplied such presses to customers in Europe and would like to share the feedback and experience of customers using such types of presses.

## Tapping into the right sectors

Yogesh Saxena, Chief Executive - Machine Building, ISGEC Heavy Engineering Ltd, remarks that IMTEX FORMING is the largest platform for machine tools manufacturers and machine tools buyers in the sub-continental region. Hence, it is crucial that the company showcases its latest technological developments after it participated in the last IMTEX FORMING.

"Our major market share comes from the Automotive and White Goods Sectors whereas other industry sectors which use our products are: Refractory, Plywood, Shipyard, Defense, Powder Compacting, Construction Industry, and Brown Goods. We aim to connect our target industries through IMTEX FORMING 2024," he adds.

**SD**

**ISGEC Heavy Engineering Ltd**  
[www.isgec.com](http://www.isgec.com)  
Hall & Stall: 2A/B-101

## PRESS BRAKES

# HRB-ATC Series from Amada

The HRB-ATC Series of Press Brakes comes with an Automatic Tool Changer (ATC) and AFH-ATC Tooling.

The ATC reduces tool setup time to accommodate various-mix, various-lot production. Equipped with an automatic tool changer, operators of various skill levels can achieve high-quality production. HRB-ATC fully automates tooling setups to accommodate operators of all skill levels and maximize bending productivity. Additionally, the automatic angle sensor (option) provides the target angle from the first

workpiece, eliminating the need for test bends.

**Automated Tool Changing:** The ATC system allows for the automatic exchange of tools, reducing setup time and increasing overall productivity.

**Precision Bending:** Amada press brakes are designed for high-precision bending, ensuring accurate and repeatable results.

**User-Friendly Controls:** The machines often come equipped with user-friendly control interfaces, making it easier for operators to program and run bending operations.

**Versatility:** With the ability to quickly change tools, these press brakes are versatile and capable of handling a wide range of bending tasks.

**Safety Features:** Press brakes from reputable manufacturers like Amada incorporate safety features to protect operators and maintain a secure working environment.

**SD**



Source: Amada (India) Pvt Ltd

**Amada (India) Pvt Ltd**  
[www.amadaindia.co.in](http://www.amadaindia.co.in)  
Hall & Stall: 5/B-105



# TruBend Center 5030



Semi-automatic panel bender

**YOU ARE  
INVITED!**

19-23 January, 2024

Visit our booth B101,  
Hall no.4, B.I.E.C.,  
Bengaluru.



The TruBend Center 5030 sets the standard when it comes to flexibility during panel bending. Discover what is arguably the widest range of parts in this machinery category with the semi-automatic TruBend Center 5030. Go far beyond traditional panel bending capabilities, process complex workpieces quickly and with flexibility.



<https://bit.ly/3HrffgM>

SCAN HERE

TRUMPF (India) Pvt. Ltd. Raison Industrial park, S. No. 276, Hissa No. 1, Village Mann, Taluka - Mulshi, Pune - 411057, Maharashtra, India. [www.trumpf.com](http://www.trumpf.com) | Phone: +91 20-667-59800 | [Marketing@in.trumpf.com](mailto:Marketing@in.trumpf.com)



**SALVAGNINI MACHINERY INDIA**

2nd Floor, Site No. 26  
560054, Bangalore  
Ref. Mr. Puneet Sharma  
T. +91 80 23609930  
E. info@salvagninigroup.com

# P2

Automatic compact panel bender

## THE FLEXIBLE BENDING CENTRE SOLUTION



19-23 January 2024  
Bengaluru, India  
Hall 5 - B101



**+** ZERO SET-UP TIME

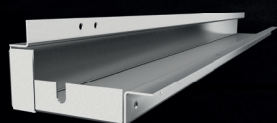
**+** FULLY AUTOMATIC PRODUCTION  
CYCLE, MANUAL LOADING/UL

**+** ONE UNIVERSAL BENDING TOOL

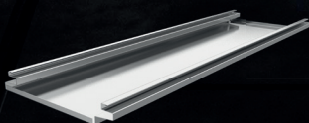
**+** EASY USER INTERFACE

**+** THICKNESS RANGE:  
FROM 0.5 TO 3.2 MM

**+** BENDING HEIGHT:  
FROM 203 TO 254 MM



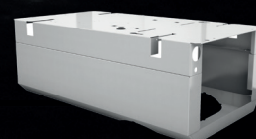
BUILDING



METAL FURNITURE



CATERING & HOTELLERIE



HVAC

Over 4,000 installations in 76 countries, the largest manufacturing plant dedicated entirely to panel benders and 40 years of experience and expertise.



# salvagnini